

DEEPPLAY

The aim of this short presentation is to show you our Ethos **DEEPPLAY**® we utilise in our childcare.

Dave & Ann Sheppard
Jadela Juniors Childminding

*n.b. As with all Early Years Providers we always work within the remit of the Government's statutory Early Years Foundation Stage. However, this curriculum only states WHAT is required, not HOW you should implement it. **DEEPPLAY**® is our solution to delivering exceptional childcare.*

Click NEXT to continue

JadelaJuniors

Caring, Sharing and Preparing

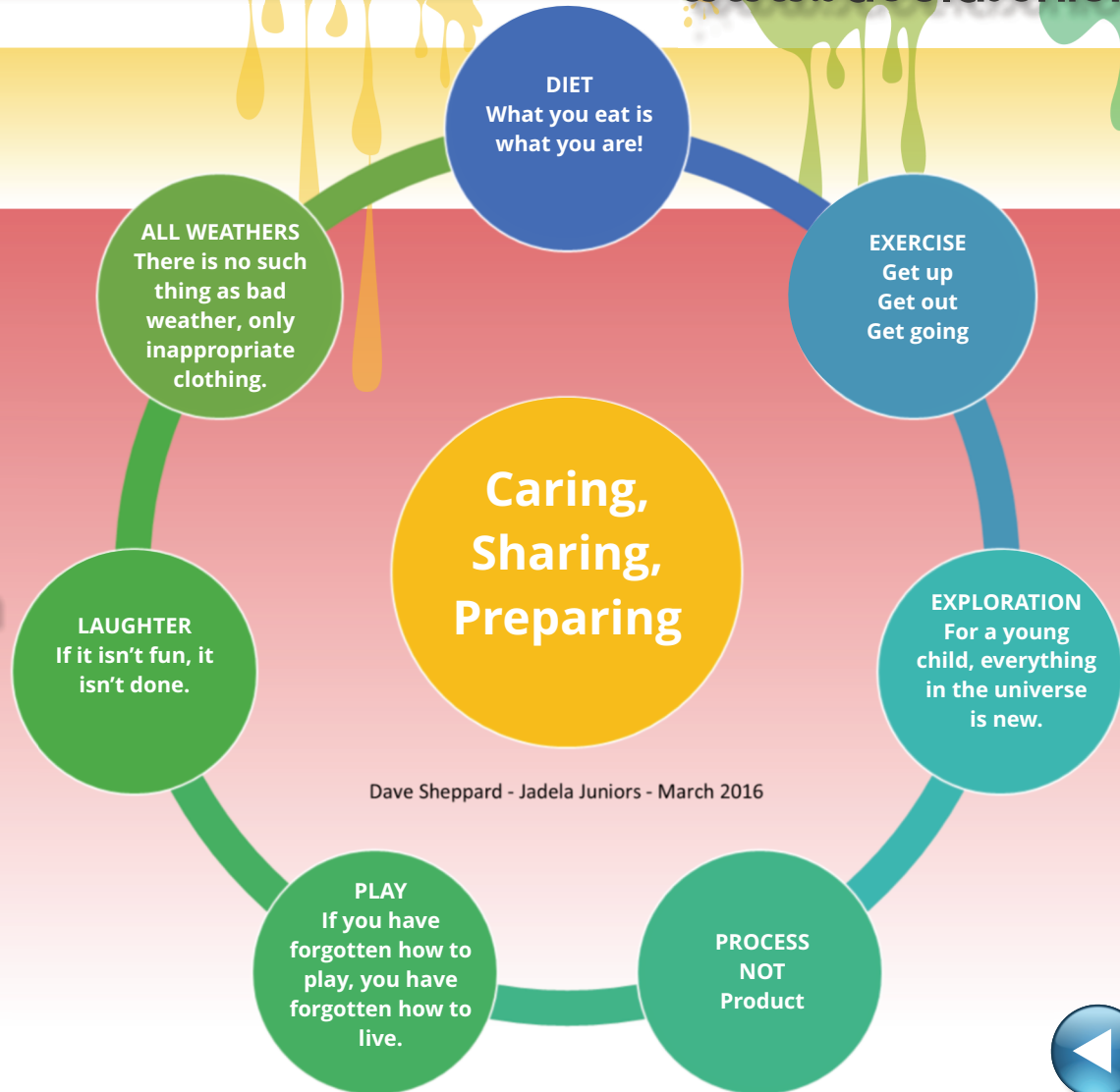


Our Ethos

DEEPPLAY

What is it?

Let's look at each of these ideas in more detail.



Dave Sheppard - Jadela Juniors - March 2016

Click NEXT to continue



DEEPPLAY - diet

A healthy, nutritionally balanced diet appropriately feeds the mind, body and soul. Eat well, eat regularly & eat healthily.

We always offer freshly prepared nutritional foods to aid your child's development and growth. You are what you eat!



Click NEXT to continue



DEEPPLAY - exercise

Physical exercise drives the body to develop and grow.

Make play physical, inside and outside, through activities involving dance, running, balancing, climbing, jumping, slithering, rolling, building, kicking, throwing and catching.



EXERCISE
Get up
Get out
Get going



Click NEXT to continue



DEEPPLAY - exploration

All the things you now take for granted are the very things your child is waiting to discover for the first time.



Recognise that your child will delight in the mundane, thrive on the ordinary, excite at the usual, and often want to repeat, repeat, repeat that experience.

EXPLORATION
For a young child,
everything in the
universe is new.

Click NEXT to continue



DEEP PLAY - process

The end product of any process is not relevant, it is the journey from the beginning to the end that is important for a child. Learning a process (how to do something) is where all the learning takes place. What the final outcome actually looks like is totally irrelevant.



Click NEXT to continue



DEEP PLAY - play

We gradually lose our ability to play if we do not engage life with the same wonder we had as a child. Regain that insight as you share in your child's delight and amazement. This will significantly enhance your ability to engage your child in their discoveries and development.



PLAY
If you have forgotten how to play, you have forgotten how to live.

Click NEXT to continue



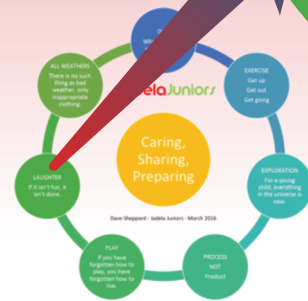
DEEPLY - laughter

When you are having fun your mind and body are at their most receptive.



In this state of mind your child wants to engage, loves to learn, wants to be involved and most of all wants to do it again and again and again.

LAUGHTER
If it isn't fun,
it isn't done.



Click NEXT to continue



DEEPPLAY - all weathers

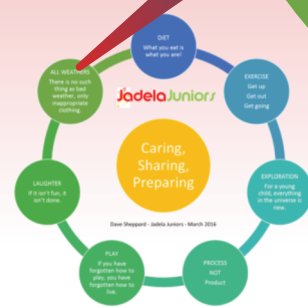
Everything looks, feels and smells different as the weather changes.



Hot, warm, cold, windy, foggy, wet, snowy, icy – there is always something new and exciting to discover. The weather isn't the problem. The problem is the way we are dressed.

Click NEXT to continue

ALL WEATHERS
There is no such thing as bad weather, only inappropriate clothing.



DEEPPLAY - yes we care

Everything we do is founded on the Early Years Foundation Stage statutory requirements.



At Jadela Juniors:

- we Care about our children
- we Share everything with our Parents
- we Prepare each child for school readiness



Click NEXT to continue



Caring, Sharing and Preparing

We **Care** for your child
and for you.

You can view a PDF
version of our
All About Me form.

The image shows a thumbnail of a form titled 'All About Me' from Jadela Juniors. The form is divided into several sections for collecting information:

- Your Child's Details:** Includes fields for Full Name, Date of Birth, Home Address, and Post Code.
- Your Child's Birthdate (Month/Day):** Includes fields for Month, Day, and Year.
- Your Child's Gender:** Includes fields for Male and Female.
- Your Child's Doctor:** Includes fields for Name, Address, Post Code, and Phone.
- Your Child's Health (Other Information):** Includes fields for Name, Address, Post Code, and Phone.



Click NEXT to continue



Caring, Sharing and Preparing

We *Share* your child's development & learning with you.

You can view a PDF version of our *Daily Diary* form.



Click NEXT to continue



Caring, Sharing and Preparing

We **Prepare** your child for their life's learning Journey.

You can view a PDF version of our *Record of Development Summary* form.



Click NEXT to continue



Recommended reference books

We have read and recommend the following books as excellent reference works and easy reads.

'Early Childhood – a guide for students' edited by Tina Bruce

'The Excellence of Play' edited by Janet Moyles

'Extending thought in Young Children' by Chris Athey

'Again! Again! Understanding Schemas' Edited by Sally Featherstone

'Heuristic Play' by Shiela Riddall-Leech

'Practical EYFS Handbook' by Penny Tassoni

'Feeding your Baby & Toddler' by Annabel Karmel



Click NEXT to continue

Thank you for your interest

We hope you found our short **DEEPPLAY** presentation useful and interesting.

A PDF description of 'DEEPPLAY' is available for download.

Dave & Ann Sheppard
Jadela Juniors Childminding



OUTSTANDING

Jadela Juniors

CHILD MINDERS

Ofsted
Outstanding

2007-2008
2008-2009
2015-2016

A graphic representing an Ofsted Outstanding award. It features the word 'OUTSTANDING' in large, colorful, block letters at the top. Below it is the 'Jadela Juniors' logo in red and green. At the bottom, the word 'CHILD MINDERS' is written in smaller, colorful, block letters. To the right, there is a dark blue rounded rectangle containing the Ofsted logo (three stylized figures) and the text 'Ofsted Outstanding'. Below this, a scrollable list shows the years '2007-2008', '2008-2009', and '2015-2016'.